

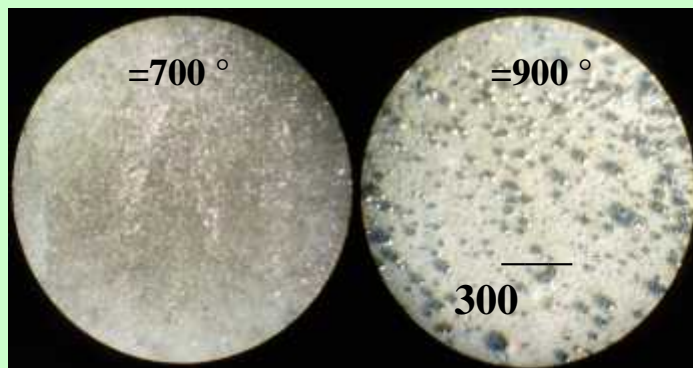


- SiO_2 -, GeO_2 -, $SiO_2:GeO_2$ -

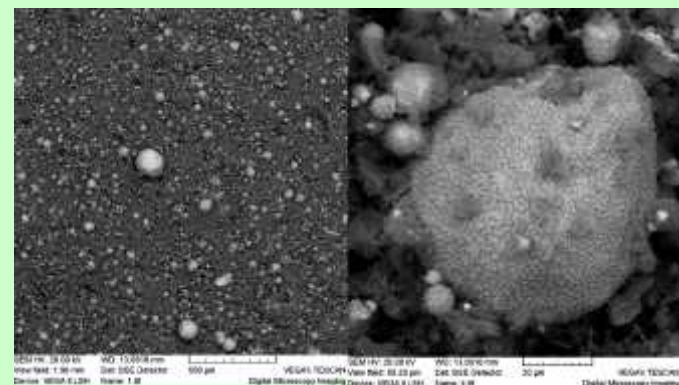
« - », $GeO_2:SiO_2$ -

.

GeE • <500 > (GeE, AXS-)



$SiO_2:GeO_2$
- 1:25



$GeO_2:SiO_2$ -

(.%),

(- 1)

=800 E

) I

: . . .

: +375 232 29 59 34. E-mail: boiko@gstu.by; rossol@gstu.by

